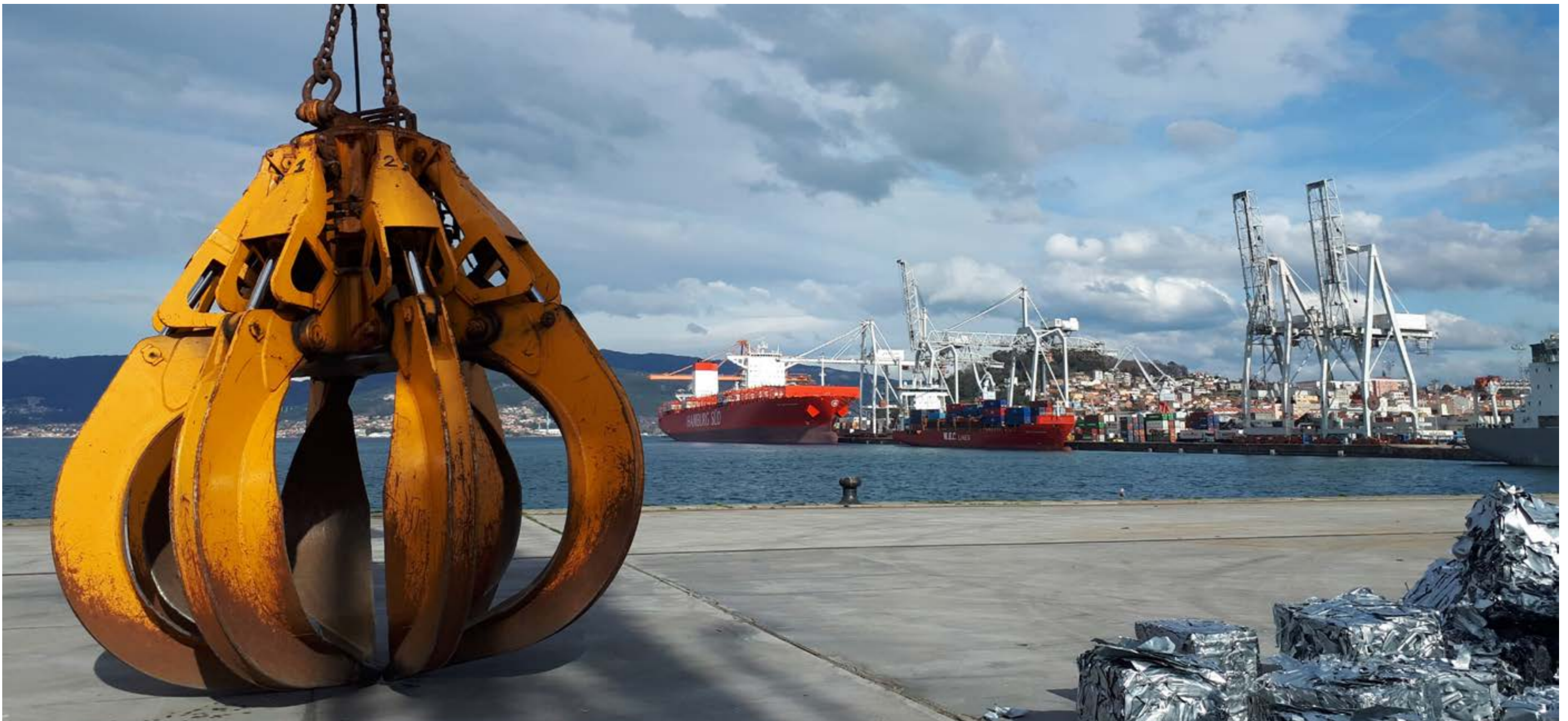


08

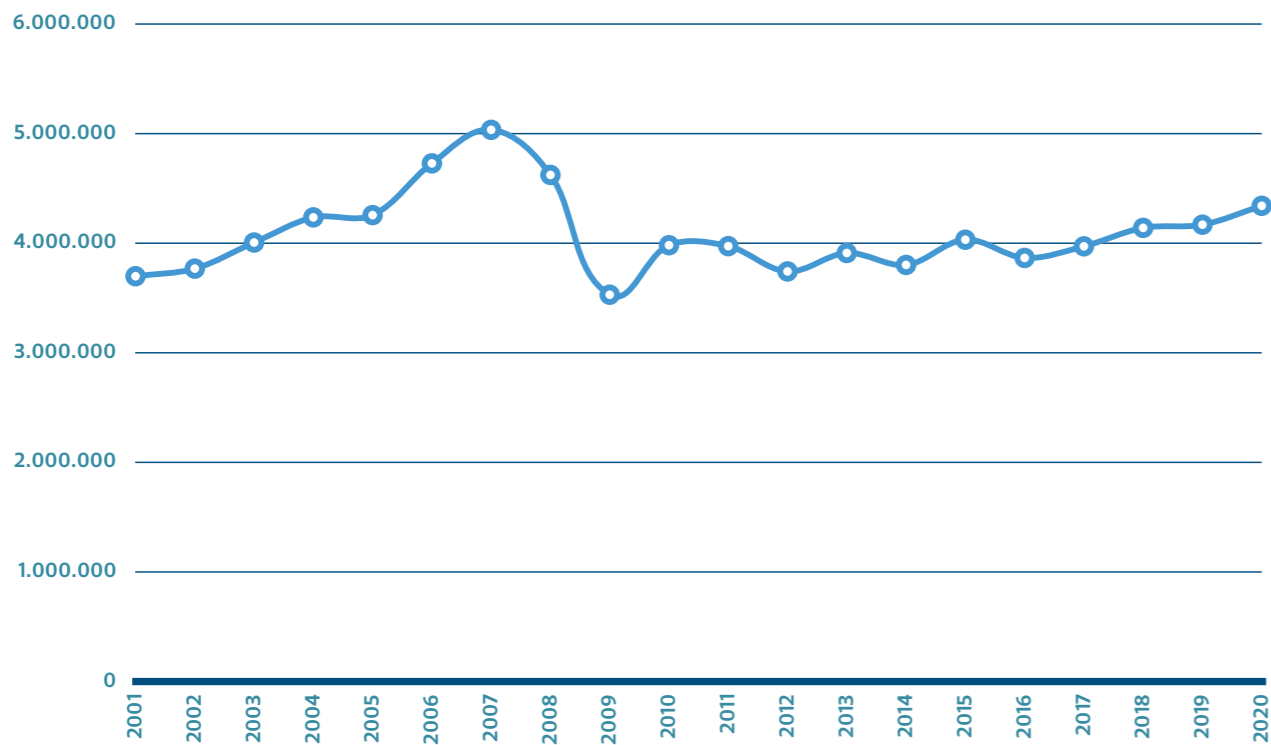
Gráficas
anexos gráficos

Charts
data charts



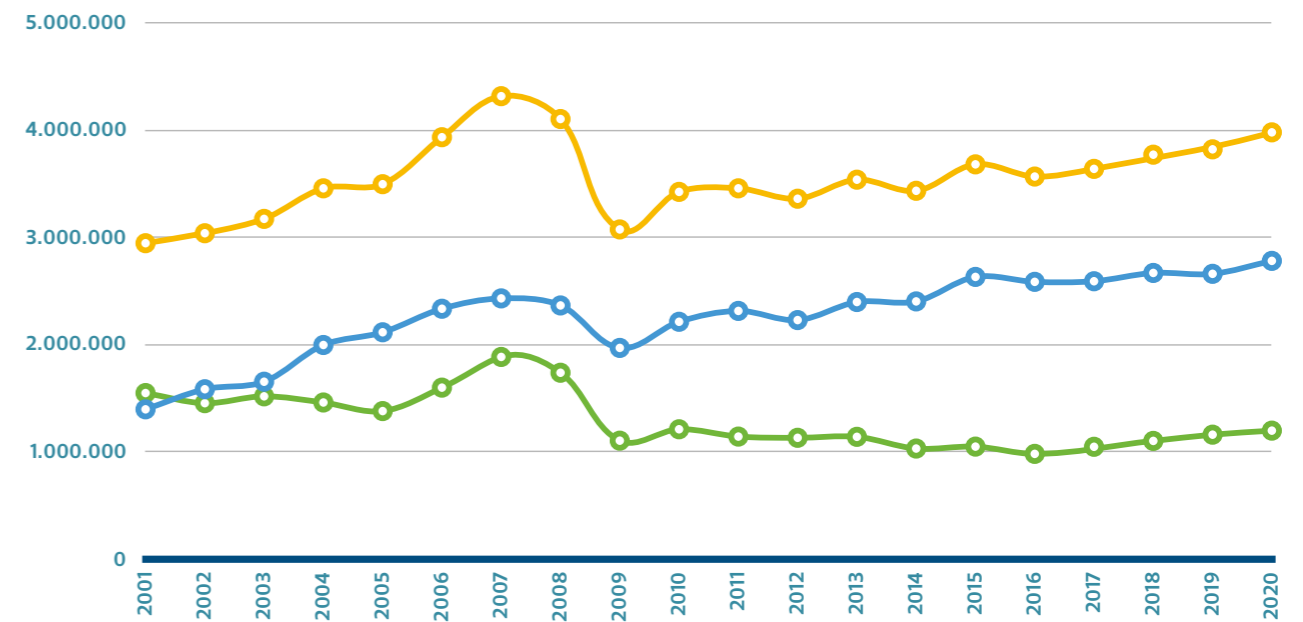
8.1 Tráfico total de mercancías
Total cargo traffic

año year	toneladas tons	año year	toneladas tons	año year	toneladas tons	año year	toneladas tons
2001	3.694.509	2006	4.724.114	2011	3.968.908	2016	3.861.603
2002	3.763.947	2007	5.030.144	2012	3.738.126	2017	3.967.226
2003	4.001.978	2008	4.618.751	2013	3.906.563	2018	4.135.849
2004	4.231.403	2009	3.525.850	2014	3.797.499	2019	4.164.544
2005	4.252.198	2010	3.977.340	2015	4.027.462	2020	4.336.978



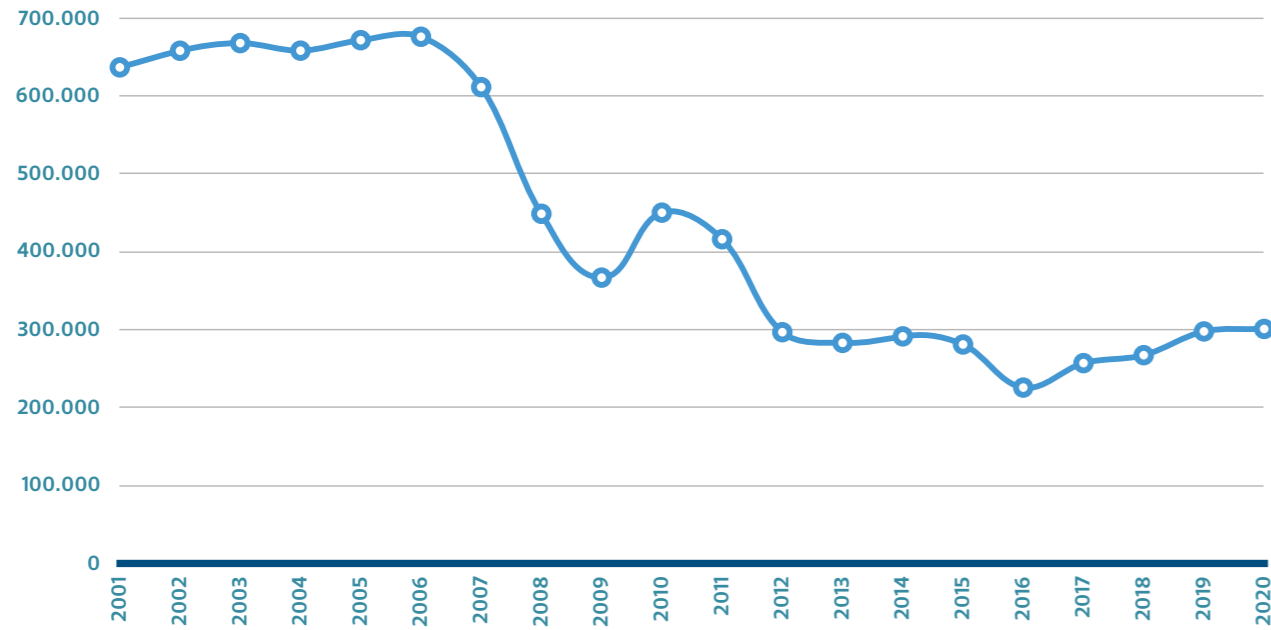
8.2 Mercancía general diversa
Breakbulk cargo

año year	contenedor container	convencional general	total	año year	contenedor container	convencional general	total
2001	1.396.639	1.548.386	2.945.025	2011	2.313.917	1.142.579	3.456.496
2002	1.583.908	1.454.014	3.037.922	2012	2.228.406	1.131.219	3.359.625
2003	1.654.004	1.517.729	3.171.733	2013	2.396.810	1.140.246	3.537.056
2004	1.996.240	1.460.317	3.456.557	2014	2.402.495	1.031.075	3.433.570
2005	2.114.849	1.380.267	3.495.116	2015	2.630.832	1.049.111	3.679.943
2006	2.334.121	1.598.869	3.932.990	2016	2.584.834	981.407	3.566.241
2007	2.430.655	1.884.900	4.315.555	2017	2.590.411	1.047.428	3.637.840
2008	2.364.847	1.737.555	4.102.402	2018	2.667.808	1.102.237	3.770.116
2009	1.968.975	1.104.411	3.073.386	2019	2.659.602	1.160.394	3.819.996
2010	2.212.671	1.210.710	3.423.381	2020	2.780.287	1.197.961	3.978.248



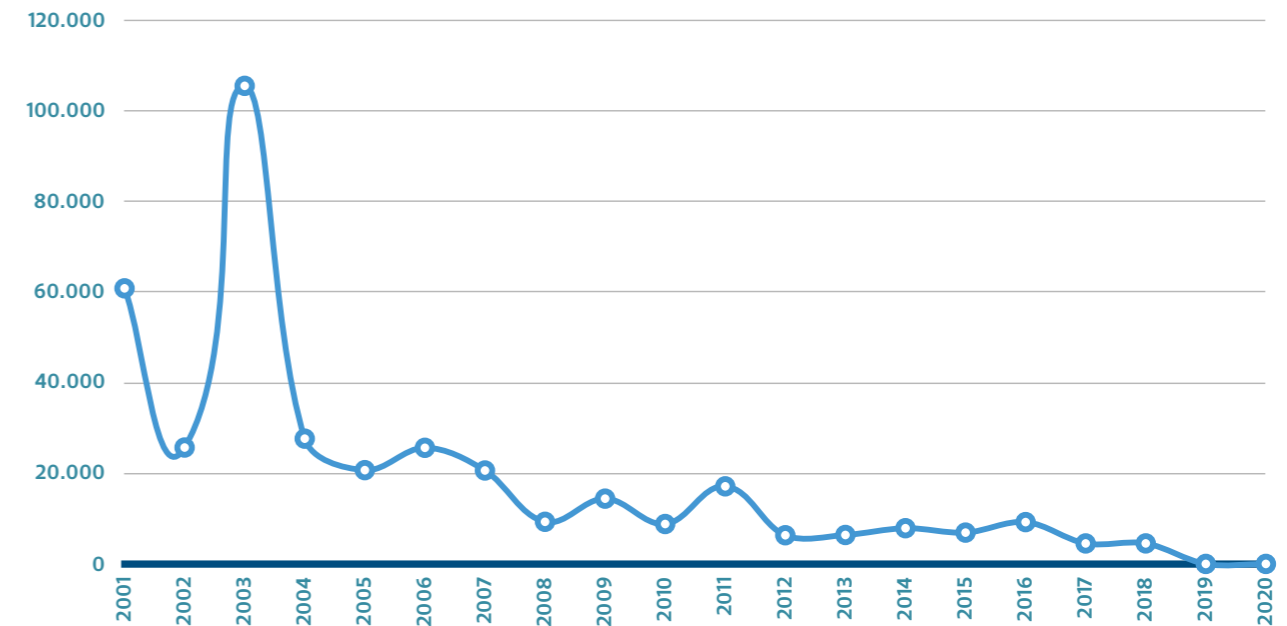
8.3 Graneles sólidos por instalación especial
Solid bulks by special installation

año year	toneladas tons	año year	toneladas tons	año year	toneladas tons	año year	toneladas tons
2001	636.923	2006	676.266	2011	416.193	2016	225.679
2002	658.300	2007	611.601	2012	296.801	2017	257.087
2003	668.103	2008	448.882	2013	283.089	2018	267.291
2004	658.391	2009	366.891	2014	291.446	2019	297.778
2005	671.834	2010	450.329	2015	281.026	2020	300.986



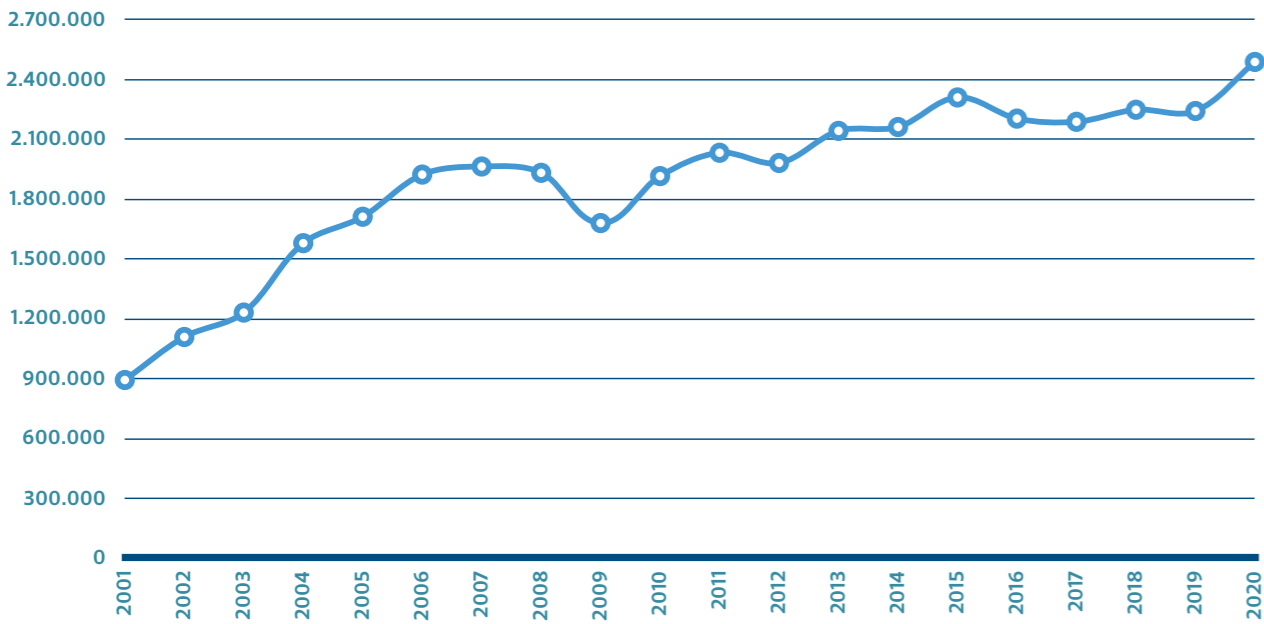
8.4 Graneles sólidos sin instalación especial
Solid bulks without special installation

año year	toneladas tons	año year	toneladas tons	año year	toneladas tons	año year	toneladas tons
2001	60.835	2006	25.633	2011	17.127	2016	9.231
2002	25.694	2007	20.625	2012	6.331	2017	4.522
2003	105.538	2008	9.298	2013	6.389	2018	4.529
2004	27.652	2009	14.411	2014	7.885	2019	0
2005	20.701	2010	8.810	2015	6.913	2020	0



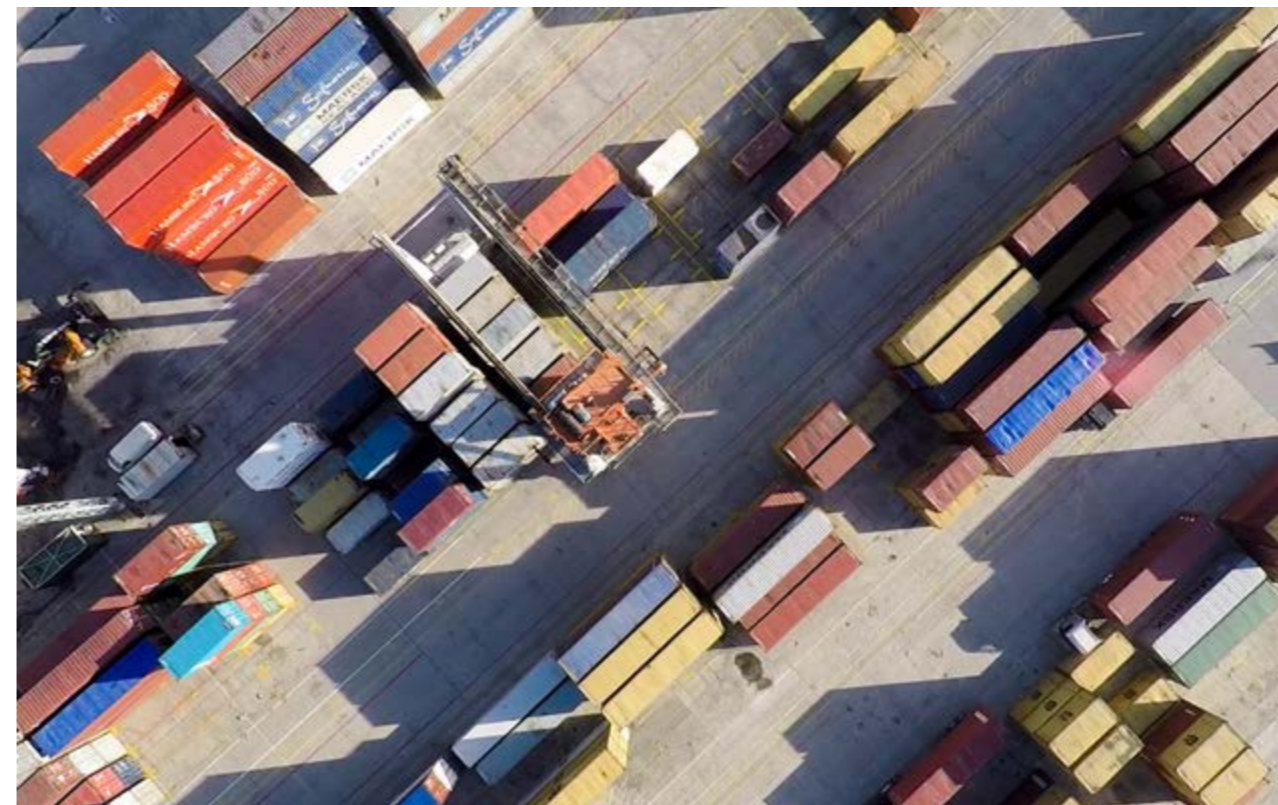
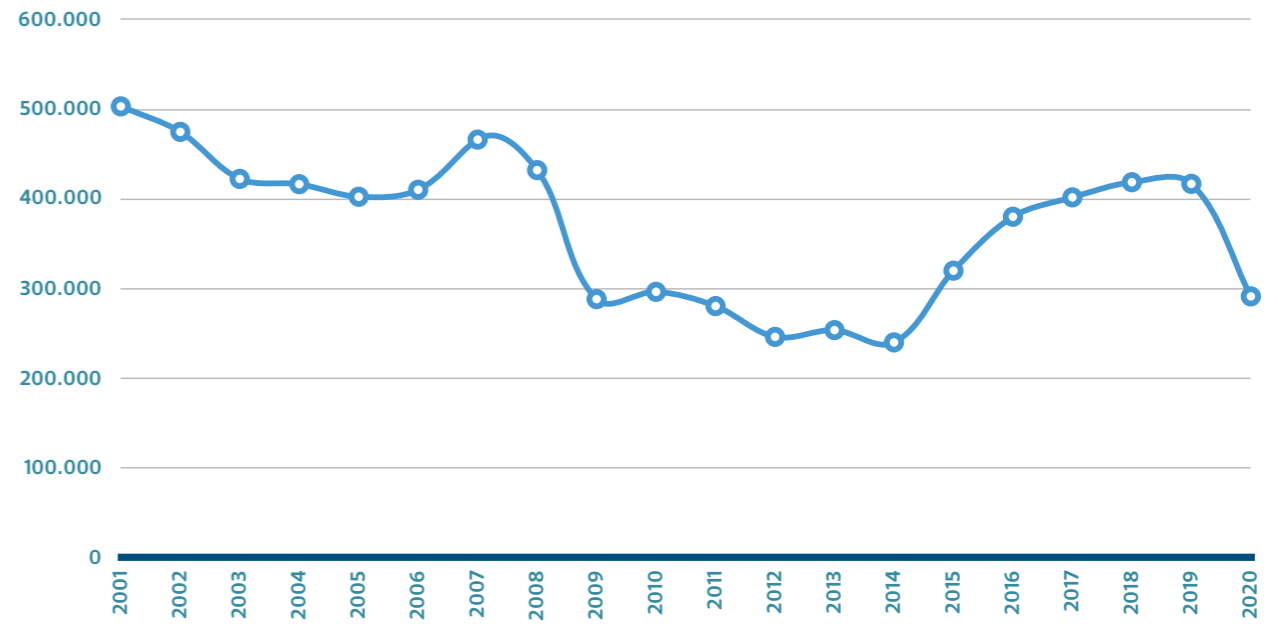
8.5 Contenedores manipulados con grúa
Containers handled by crane

año year	toneladas tons	año year	toneladas tons	año year	toneladas tons	año year	toneladas tons
2001	893.294	2006	1.923.748	2011	2.033.221	2016	2.204.548
2002	1.109.021	2007	1.964.370	2012	1.982.059	2017	2.188.502
2003	1.231.523	2008	1.932.621	2013	2.142.918	2018	2.249.107
2004	1.579.654	2009	1.680.527	2014	2.162.285	2019	2.242.660
2005	1.712.288	2010	1.916.075	2015	2.310.672	2020	2.488.803



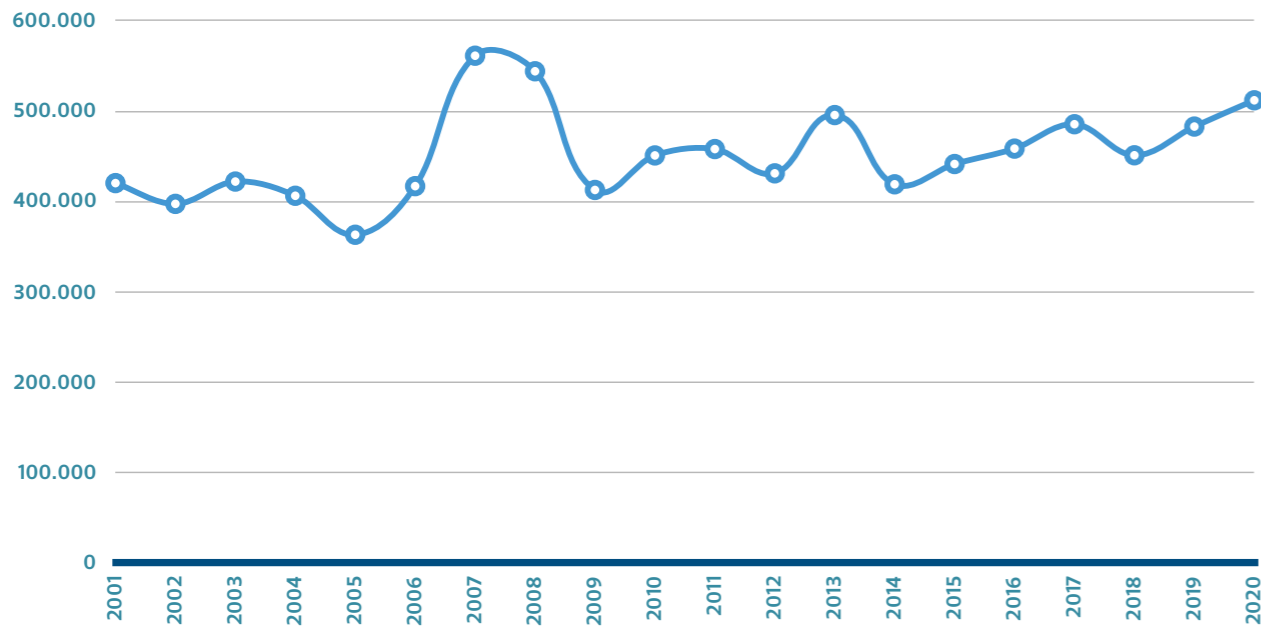
8.6 Contenedores RO-RO
RO-RO Containers

año year	toneladas tons	año year	toneladas tons	año year	toneladas tons	año year	toneladas tons
2001	503.345	2006	410.373	2011	280.696	2016	380.286
2002	474.887	2007	466.285	2012	246.347	2017	401.909
2003	422.481	2008	432.226	2013	253.892	2018	418.773
2004	416.586	2009	288.448	2014	240.210	2019	416.942
2005	402.561	2010	296.596	2015	320.160	2020	291.484



8.7 Automóviles
Automobiles

año year	toneladas tons	año year	toneladas tons	año year	toneladas tons	año year	toneladas tons
2001	420.436	2006	417.080	2011	458.111	2016	458.593
2002	397.463	2007	561.362	2012	431.239	2017	485.579
2003	422.151	2008	544.151	2013	495.700	2018	451.214
2004	406.421	2009	412.856	2014	419.119	2019	482.988
2005	363.300	2010	451.052	2015	441.545	2020	512.051



8.8 Pesca fresca, salada y congelada
Fresh, frozen and salt fish

año year	toneladas tons	año year	toneladas tons	año year	toneladas tons	año year	toneladas tons
2001	563.637	2006	786.049	2011	780.472	2016	707.916
2002	560.227	2007	732.951	2012	803.357	2017	743.854
2003	671.610	2008	751.966	2013	751.246	2018	703.032
2004	656.754	2009	697.259	2014	783.088	2019	645.769
2005	720.800	2010	788.394	2015	745.087	2020*	607.967

* no se incluye pesca fresca viveros flotantes

